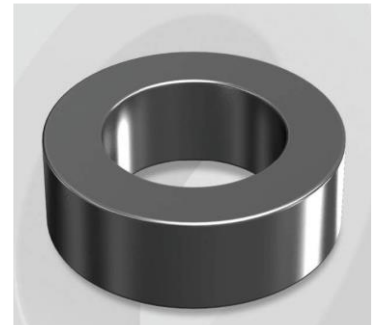


# CH378060GT11

## Electrical Characteristics

Material	Permeability (μ)	AL ± 8% (nH/N <sup>2</sup> )	DCB (% min) @ 100 Oe	Coreloss (mW/cm <sup>2</sup> , max) @ 50kHz, 1000G
High Flux GT	60	61	77.4	180

OD : 378



## Core Dimensions

Dimensions		Uncoated		Coated		Color	Packaging
		(mm)	(inch)	(mm)	(inch)		
OD	(Max)	37.80	1.488	38.70	1.524	Black	Box Qty = 120 pcs
ID	(min)	23.20	0.913	22.30	0.878		
HT	(max)	11.00	0.433	12.00	0.472		

## Physical Characteristics

Cross Section (A)	Path Length (ℓ)	Window Area (Wa)	Volume (V)	Breakdown Voltage (Vac)
0.763 cm <sup>2</sup>	9.40 cm	3.91 cm <sup>2</sup>	7.172 cm <sup>3</sup>	1,000
0.118 in <sup>2</sup>	3.701 in	771,660 cmil	0.4376 in <sup>3</sup>	

## Winding Information

AWG Wire No. Dia. (cm)	Single Layer Turn Rdc. (Ω)	AWG Wire No. Dia. (cm)	Single Layer Turn Rdc. (Ω)	Winding length/turn (cm)				
12 0.213	N-A	21 0.0785	N-A	4.04				
13 0.190		40% winding factor Surface Area (cm <sup>2</sup> )						
14 0.171		62.06						
15 0.153		40% Wound Di.(mm)						
16 0.137		OD ID HT						
17 0.122		44.33 14.61 18.66						
18 0.109								
19 0.0980								
20 0.0879								
				29 0.0330				

## Typical DC Bias Performance

